

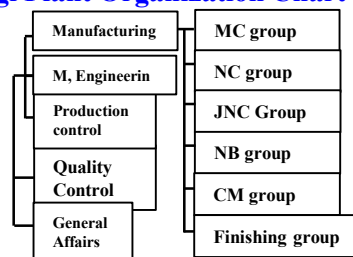
Visit to a virtual factory at the Yagi Plant

This time, we planned a tour of the virtual factory at the Yagi Plant. About **"Yagi Plant Organization Chart"** 100 people this is the main plant where employees work.

Asked **three questions** to each group leader and quality control personnel.

- (Q1) What kind of machines are there in the process in charge?
 (Q2) What is the most difficult workpiece (measured object) so far?
 (Q3) Please appeal to the group (business) in charge.

YouTube^{JP} For videos, refer to the QR Code and **"Yagi Factory Introduction"**.



MC Group Leader **in charge of vertical and horizontal machining centers**

- (A1) 12 vertical machining centers and 7 horizontal machining centers
 (A2) If the thickness of the object to be processed is thin, it is difficult.
 (A3) We are taking on challenges with high levels of difficulty.



NC Group Leader **in charge of Combined CNC Lathe**

- (A1) 2 turning centers, 11 compound lathes and 12 NC lathes with 2 axes
 (A2) long, narrow, tough geometric tolerances, hard-to-cut materials
 (A3) A wide range of experienced persons are available for flexible response.



JNC Group Leader **in charge of Swiss-type CNC automatic lathe**

- (A1) A processing machine that automatically supplies from round bars.
 (A2) Material that is difficult to see with the naked eye and has not been handled until now.
 (A3) We share information in the group, challenge of new things.



NB Group Leader **in charge of CNC small lathes**

- (A1) 11 small lathes and 1 machine equipped with a parts transfer robot
 (A2) Finish the inner surface roughness to less than Ra1.6 by drilling only.
 (A3) The veteran and the young and half members share the wisdom and respond.



CM group leader **in charge 5-axis machining center**

- (A1) Seven high-precision high-speed fine processing machines and one five-axis processing machine
 (A2) Processing of 3D shaped products, difficult-to-machine materials, and ceramics
 (A3) Everyone can perform a series of tasks.



Quality Control Department **Measuring Machine Inspection and Calibration Control**

- (A1) 3-D measuring machine, roundness measuring machine, image measuring machine
 (A2) It is about reading a drawing and establishing a measurement method from which to create measurement coordinates.
 (A3) We are responsible for everything from inspection of measuring machines to calibration control.



• In addition to the group we introduced, the Manufacturing Department also has the Finish Group, which specializes in mirror polishing and Manufacturing Technology Division, which production facilities manufactures jigs and tools.

FUTA-Q, Ltd. Sales Department at the Headquarters

URL <https://futaku.co.jp> E-Mail futaku-info@futaku.co.jp

Headquarters :33-3 Karahashi-keiden-cho, Minami-ku, Kyoto City, Kyoto Pref. 601-8454, Japan

Tel: +81-75-661-2931 / Fax: +81-75-661-2937

Tokyo Office :San-Roze Musashino N0.501, 1-2-9, Naka-cho Musashino-shi Tokyo pref. 180-0006, Japan

Tel: +81-422-27-7629 / Fax: +81-422-27-7639