

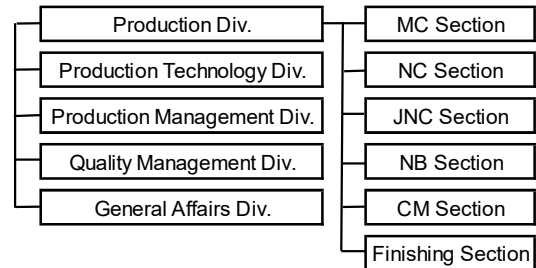
Online Factory Tour in Yagi

Yagi Factory, our main factory, has about 100 employees. The production division consists of six sections having the name derived from the machines they are working with.

The numbered answers in the following sections are correspond with the following questions.

- (1) How many and what kind of tools or machines is the section equipped with?
- (2) What is the most challenging point in jobs?
- (3) What is the greatest feature of your section?

The organization chart in Yagi Factory



MC Section for machining centers

- (1) 12 vertical machining centers and 7 horizontal types
- (2) A thin work which could cause a distortion
- (3) Being active and positive toward difficult processing



NC Section for multifunctional CNC machining lathes

- (1) 2 turning centers, 12 numerical controlled lathes, and 11 multifunctional machining lathes
- (2) Thin and long bar, a work with strict geometrical tolerance, and hard-to-cutting materials
- (3) Flexible thinking for solving problems with a wide range of engineers



JNC Section for Swiss type automatic lathes

- (1) Making automatically small parts from a long bar
- (2) Too small parts to look with the naked eye
- (3) Challenging power toward new processing technique



NB Section for CNC automatic lathes

- (1) 11 CNC automatic lathes and one part handling robot
- (2) Finishing the inside of a hole on resin to Ra1.6 by drilling
- (3) Problem solving ability with the members' knowledge



CM Section for high-precision high-speed machines

- (1) 7 high-precision and 1 five-axis machining centers
- (2) Three-dimensional processing and ceramic processing
- (3) Members' skills throughout from CAD/CAM to burring



Quality Management Section

- (1) Three-dimensional measurement, surface roughness measurement, and circularity measurement
- (2) Building a measurement method from a drawing
- (3) Maintenance and calibration of all kinds of measurement tools



FUTA-Q Co., Ltd.

URL <https://futaku.co.jp>

E-mail futaku-info@futaku.co.jp

[Headquarters]
33-3 Karahashi-keiden-cho, Minami-ku, Kyoto
City, Kyoto Pref. 601-8454
Tel: +81-75-661-2931

[Tokyo Office]
San-Roze Musashino No.501,
1-2-9, Naka-cho Musashino-shi 180-0006
Tel: +81-422-27-7629