

Swiss Type Automatic Lathes Supporting FUTA-Q Products

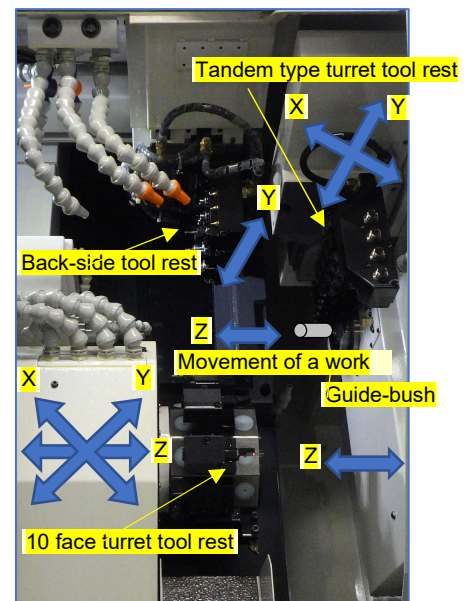
1. Swiss Type Automatic Lathe

The Swiss type automatic lathe is well known as a **sliding headstock type CNC automatic lathe** which has been improved to be a multifunctional lathe in Japan. This originated in an automatic lathe having a movable main spindle invented in Moutier, Switzerland in 1911 for making small screws for a watch. The machine can process continuously a long rod material to make micro components with a complex shape.

2. Swiss Type Automatic Lathes in FUTA-Q

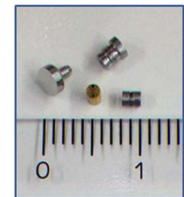
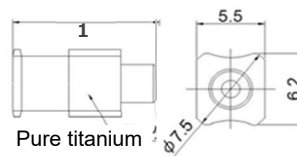
FUTA-Q has 7 Swiss type automatic lathes for manufacturing micro components of medical devices or others, and is going to install two more. The features of these machines are as follows.

- (1) A thin and long material is machined close to the guide bush to prevent it from warped, resulting in the processing in high accuracy.
- (2) A long rod material can be processed continuously without manual intervention.
- (3) Both the front and back sides of a work can be processed continuously, because the work is re-clamped automatically with the second main spindle at the backside.
- (4) A part having a complex shape can be processed by changing the tools in the three tool rests holding 36 tools simultaneously.
 - The comb blade tool rest can travel in XY axes and rotate in 135°.



3. Processed example

Part name: Lure lock
Material: Pure titanium
(high corrosion resistance,
low thermal conductivity,
and hard-to-process)
Size: 5.5 x 6.2 x 12 mm



4. Specification

- Chucking diameter: 1 - 16 mm
- Machine configuration: Twin spindles, three tool rests of comb blade, turret, and backside.
- Spindle speed: 12,000 rpm
- The number of tools: 36 with a little extra
- Longest bar fed: 2.5 m



FUTA-Q Co., Ltd.

URL <https://futaku.co.jp>

E-mail futaku-info@futaku.co.jp

[Headquarters]
33-3 Karahashi-keiden-cho, Minami-ku, Kyoto
City, Kyoto Pref. 601-8454
Tel: +81-75-661-2931

[Tokyo Office]
San-Roze Musashino No.501,
1-2-9, Naka-cho Musashino-shi 180-0006
Tel: +81-422-27-7629